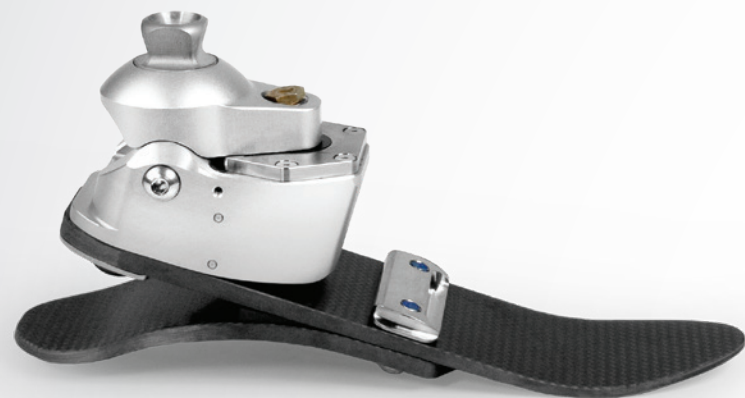


ODYSSEY K3®

curved hydraulic ankle
carbon fiber base
dual stage stride control



The Odyssey K3 features College Park's patented curved hydraulic ankle and a high-frequency carbon fiber base. The robust ankle housing and angular positioning was designed for moderate impact users able to balance without assistance. Combining smooth hydraulics, a dynamic foot base, and freshwater capabilities, the Odyssey K3 can perform well during activities like multi-terrain hiking or city walking.

ODYSSEY K3 PART NUMBER

ODK3

SIDE	SHELL COLOR*	SIZE
L or R	C, T, B, or J	21-30

EN

FIRMNESS CATEGORY
D 1-5

* (C)aucasian, (T)an, (B)rown, or (J)et Black. Shell width is standard.
Example part number: ODK3 LCEN 24 D3

ODYSSEY K3 FIRMNESS CATEGORIES

PATIENT WEIGHT	0-140lbs	141-180	181-220	221-275
SIZE	21-30cm			
LOW IMPACT	1	2	3	4
MODERATE IMPACT	2	3	4	5

ENVIROSHELL PART NUMBER

HZ S

SIDE	SHELL COLOR**	SIZE
L or R	C, T, B, or J	21-30

** (C)aucasian, (T)an, (B)rown, or (J)et Black.



Enviroshell included with every foot order



TECH SPECS

FUNCTION

Curved Hydraulic

BUILD HGT

21-30 cm | 3.0 in

MOUNTING

Endo (IP)

WEIGHT LIMIT

275 lbs

L-CODE‡

L5981
L5968

PDAC APPROVED!

WATER CAPABILITY



WATERPROOF IN FRESH WATER

SIZES

21-30 cm

WEIGHT*

749 g

IMPACT LVL



WARRANTY

3 years

ENVIROSHELL†

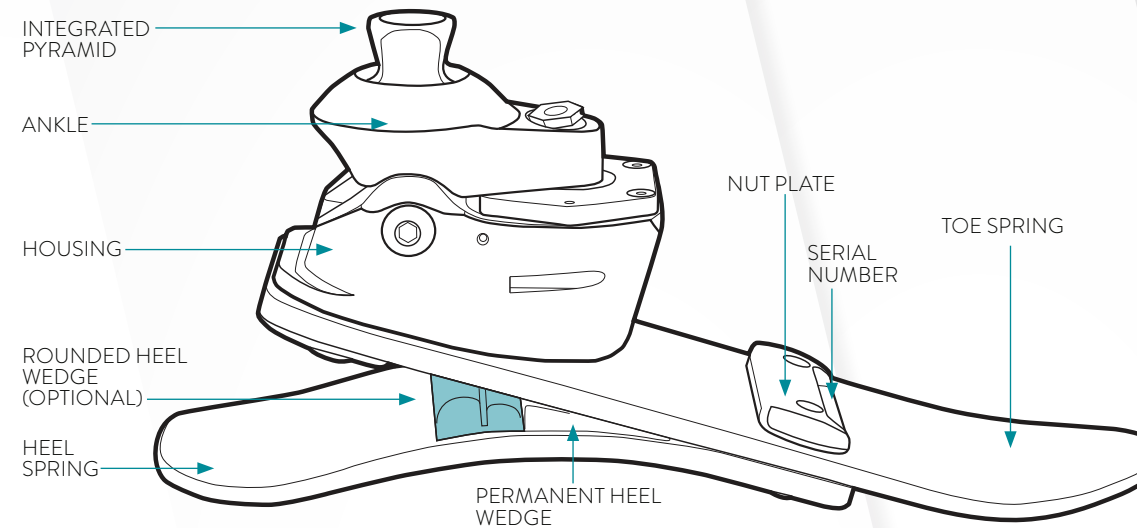


standard

*26 cm model, including Enviroshell. †The listing of codes with these products should not be construed as a guarantee for coverage or payment. Ultimate responsibility for the coding of services/products rests with the individual practitioner.
‡Caucasian, Tan, Brown, or Jet Black.

INCLUDED

Endo foot includes: sandal toe foot shell and CPI sock and wedge kit



HARDWARE AND TOOLS

	PART NUMBER	DESCRIPTION
	ODK3 HWK 2125	Odyssey K3 Wedge Kit, 21-25cm
	ODK3 HWK 2630	Odyssey K3 Wedge Kit, 26-30cm
	CA 409	Cyanoacrylate Adhesive, 409 Gel (CA glue)
	CP SSET	Super Set Screws (8pc) M8 x 14mm

	PART NUMBER	DESCRIPTION
	TFH 800	Foot Horn, Stainless Steel
	CP HK 3	Hex Key, 3mm, for adjusting Stride Control. Included with foot order.
	CP HK 4	Hex Key, 4mm

SHELLTREAD

	PART NUMBER (LEFT/RIGHT)	DESCRIPTION	ADDITIONAL INFORMATION
	HZ TLN x / HZ TRN x	Shelltread (left or right), Neutral (indicate size)	Increases durability and prevents premature wear of foot shell.

SOCKS

	PART NUMBER	DESCRIPTION	ADDITIONAL INFORMATION
	HZ SS 2125	CPI Sock, 21-25cm	
	HZ SS 2630	CPI Sock, 26-30cm	
	HZ SSK 2125	CPI Sock, 6-pack, 21-25cm	Highly durable sock that acts as a noise barrier and protects the foot from debris.
	HZ SSK 2630	CPI Sock, 6-pack, 26-30cm	